



KAARA
WOOD + FLOORING

ENGINEERED WOODEN
FLOORING



Walnut Flower

Elegant Wooden Flooring for Timeless Spaces

Step into the world of KAARA, where your vision for luxury wooden flooring becomes reality. Discover our handpicked collection, from rich hardwood and resilient engineered wood to sleek laminate and intricate parquet, all crafted to fit your unique style. Elevate your interiors with exclusive designer patterns like chevron and herringbone, meticulously tailored to bring your space to life.

KAARA extends its expertise beyond interiors, offering high-performance exterior woods perfect for outdoor spaces like decking, cladding, and gates. Each piece combines the durability you need with the natural beauty you desire.

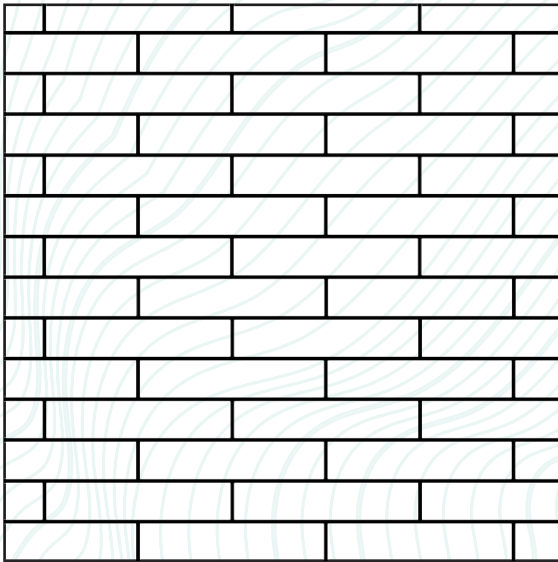
Transform your space with KAARA's finest wooden flooring—where quality, craftsmanship, and personalized design meet.



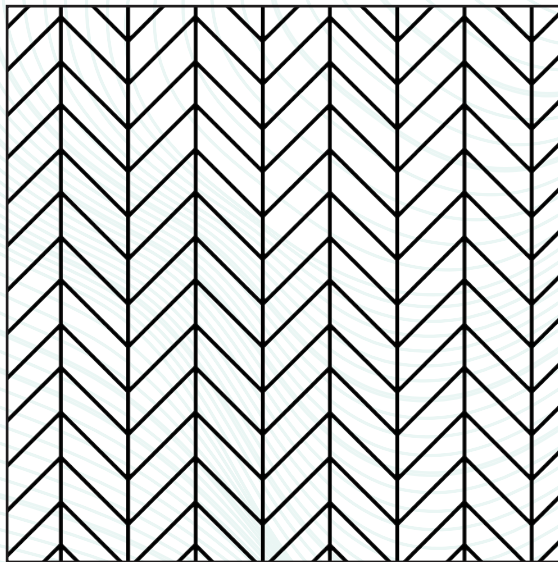
WOODEN FLOORING IS WHERE LUXURY MEETS
SUSTAINABILITY, CREATING SPACES THAT FEEL ALIVE.

Oak Caramel

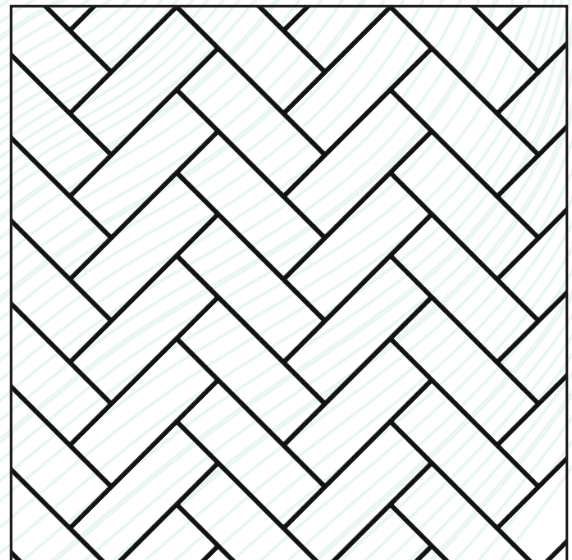
Engineered Series



Plank

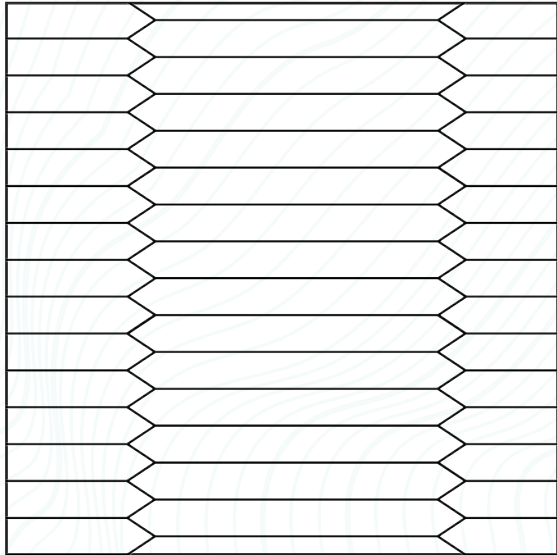


Chevron

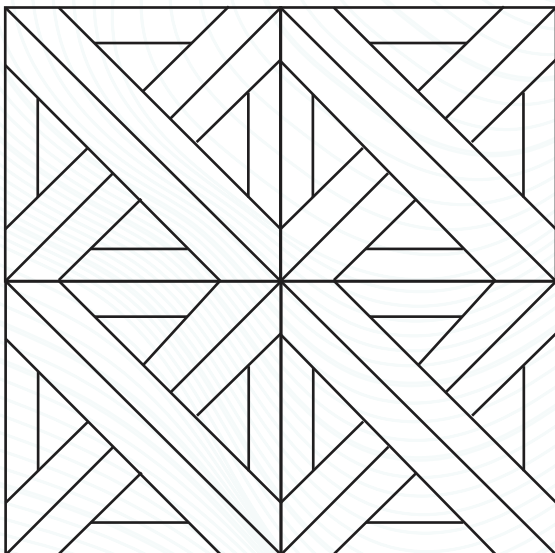


Herringbone

Engineered Series



Designer



Parquet



American Walnut Dark

KAARA engineered wooden flooring is a modern and versatile choice, combining the timeless beauty of natural wood with the enhanced durability of advanced materials. Each plank is crafted with a 3mm layer of real wood veneer, securely bonded to a stable pine core and base, resulting in a total thickness of 14mm and a length of 1900mm. This construction offers the authentic look and feel of solid hardwood while providing superior resistance to moisture and expansion.

KAARA flooring embraces both classic and contemporary styles. The traditional plank look adds a clean and timeless appeal to any space, bringing sophistication and character. Whether you prefer the rustic charm of oak, the sleek elegance of teak, or the evergreen walnut, KAARA has an option to suit every interior.

Engineered Plank Flooring

Transform your space with KAARA engineered wooden flooring—a perfect balance of style, performance, and versatility.



Burma Teak
14/3 x 150 x 1210 mm



Tobacco Oak
14/3 x 190 x 1900 mm





Kaya Kuku
14/3 x 120 x 1210 mm



Merbau
14/3 x 190 x 1900 mm



Oak Carbonized Dark
14/3 x 190 x 1900 mm



American Walnut Dark
14/3 x 190 x 1900 mm



Oak Wheat
14/3 x 190 x 1900 mm



Oak Limewash
14/3 x 190 x 1900 mm



Oak Graphite
14/3 x 190 x 1900 mm



American Walnut Light
14/3 x 190 x 1900 mm



Cherry
14/3 x 190 x 1900 mm



Oak Natural Select (Knotless)
14/3 x 190 x 1900 mm



Oak Barn
14/3 x 190 x 1900 mm





Oak Limewash Select (Knotless)
14/3 x 190 x 1900 mm



Oak Natural
14/3 x 190 x 1900 mm



Oak Caramel
14/3 x 190 x 1900 mm





Engineered Herringbone Flooring

KAARA herringbone engineered wooden flooring is a sophisticated and stylish choice that brings timeless elegance and unique character to any room. Each plank is crafted with a 3mm layer of real wood veneer, securely bonded to a durable pine core and base, offering a total thickness of 14mm, width of 90 mm and a length of 600mm. This construction captures the authentic look and feel of solid hardwood while providing excellent resistance to moisture and expansion.

The herringbone pattern is instantly recognizable for its distinctive zigzag arrangement, where planks are laid at angles to form a series of 'V' shapes. This layout adds depth, texture, and an eye-catching sense of movement, making it a perfect choice for creating a dynamic and refined aesthetic. The versatile herringbone design can be used to enhance the visual space of a room or highlight focal points. KAARA herringbone engineered wood flooring is available in a variety of wood species and colours, allowing you to find the perfect match for your interior design.

Elevate your space with KAARA herringbone engineered wooden flooring—a blend of style, durability, and sophistication that stands the test of time.

Size: 14/3mm x 90mm x 700mm

Coffee Brown Oak
14/3 x 90 x 700 mm



Burma Teak
14/3 x 90 x 700 mm

Smoked Grey Oak
14/3 x 90 x 700 mm



American Walnut
14/3 x 90 x 700 mm

Oak Natural
14/3 x 90 x 700 mm



Oak Armani
14/3 x 90 x 700 mm



Burma Teak

Series

Engineered Chevron Flooring

The chevron pattern is characterized by its distinctive V-shaped design, where each plank is precisely cut at a 45-degree angle and laid in a zigzag formation. This creates a continuous, flowing pattern that adds visual intrigue and a sense of movement to the floor. The sharp, angular cuts and the way the planks meet at the point of each 'V' give a bold and dynamic look, enhancing the overall aesthetic of your space. This pattern adds a touch of luxury and visual interest, making it an ideal option for creating a striking and unique floor design. Available in a variety of wood species and colours for any space.

Size: 14/3mm x 90mm x 610mm





Oak Natural
14/3 x 90 x 610 mm



English Grey Oak
14/3 x 90 x 610 mm





Oak Carbonized
14/3 x 90 x 610 mm



Oak Spice
14/3 x 90 x 610 mm



Oak Limewash
14/3 x 90 x 610 mm

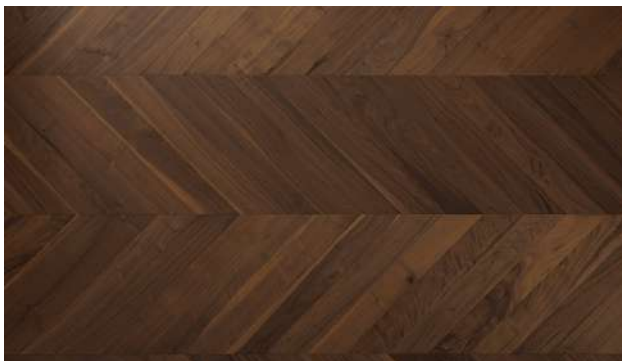




Burma Teak
14/3 x 90 x 610 mm



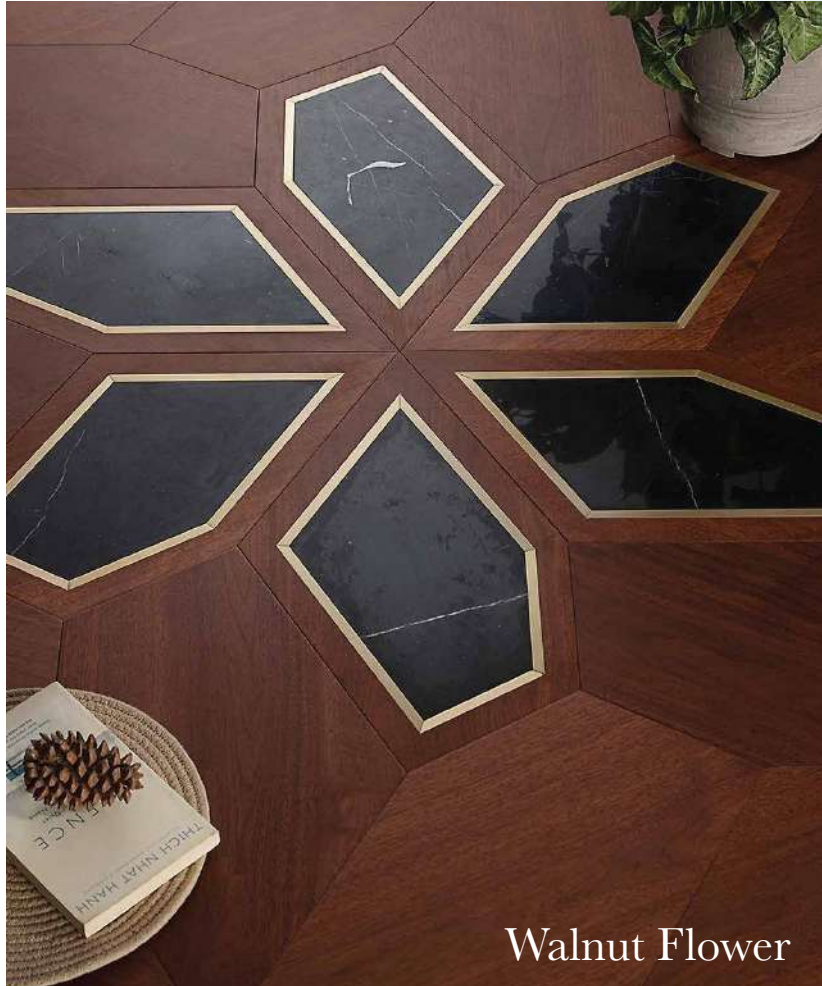
American Walnut
14/3 x 90 x 610 mm





LIFE IS TOO SHORT FOR BORING FLOORS —
EMBRACE THE WARMTH AND STYLE OF WOOD

Walnut Arrow



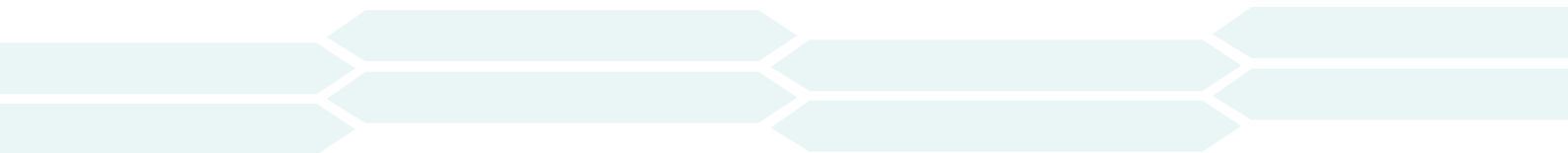
Walnut Flower

Series

Engineered Designer Flooring

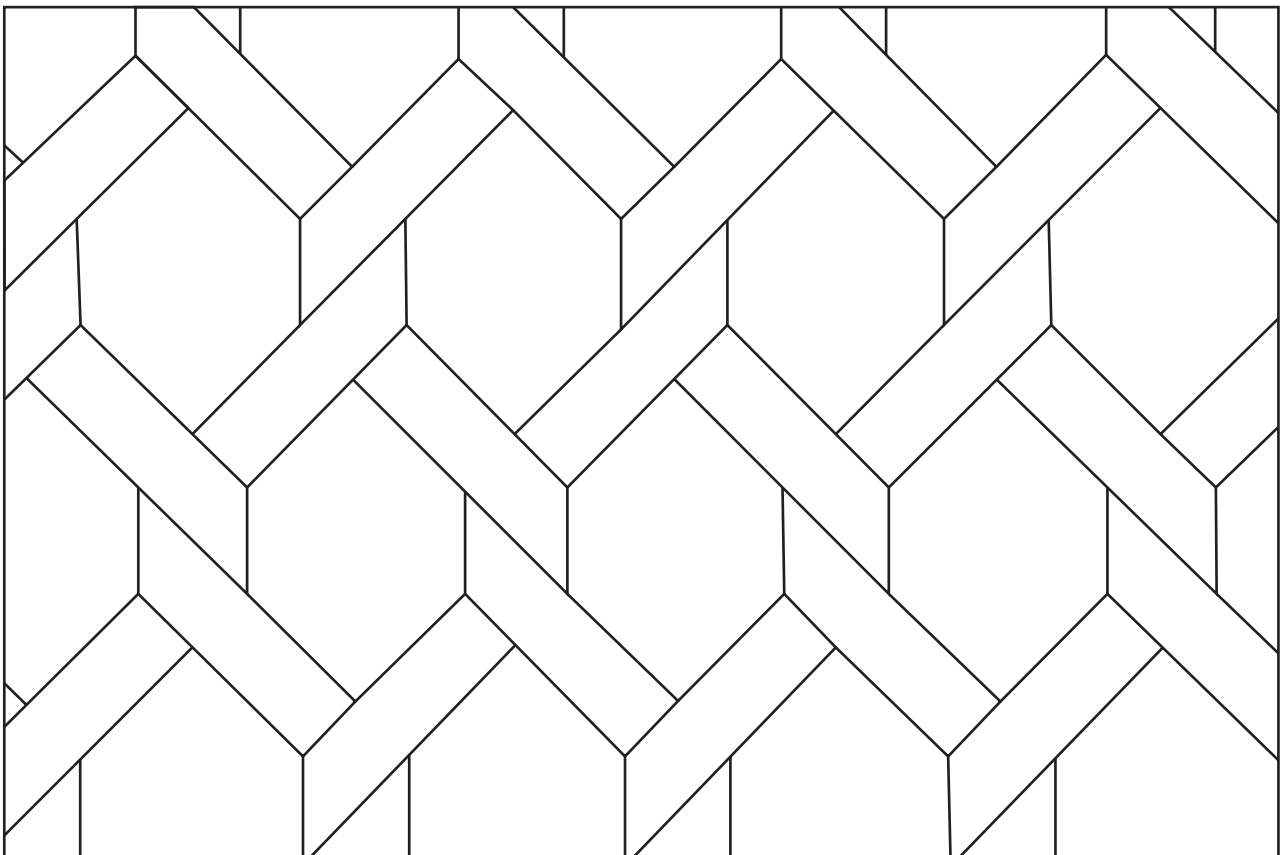
Designer wood flooring is a premium choice known for its unique and customizable look, perfect for creating a distinctive and luxurious ambiance in any space. Made from high-quality wood veneers and advanced engineered materials, this type of flooring offers a sophisticated aesthetic with a range of finishes, colors, and textures to suit any interior design preference. Designer wood flooring can feature intricate inlays and patterns such as leaf, flower, marble and brass inlay, lotus, and more, allowing you to create a personalized and eye-catching layout.

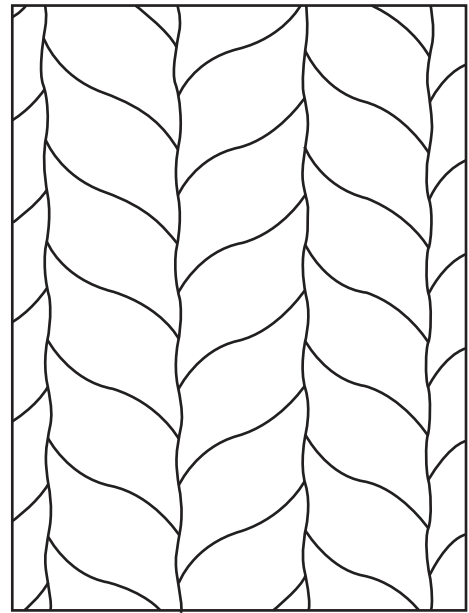
With a thickness of 15mm, designer wood flooring blends the timeless appeal of natural wood with enhanced durability and stability. It's a very unique and trending flooring option that brings a fresh, modern touch to any home or business, ensuring both style and performance.



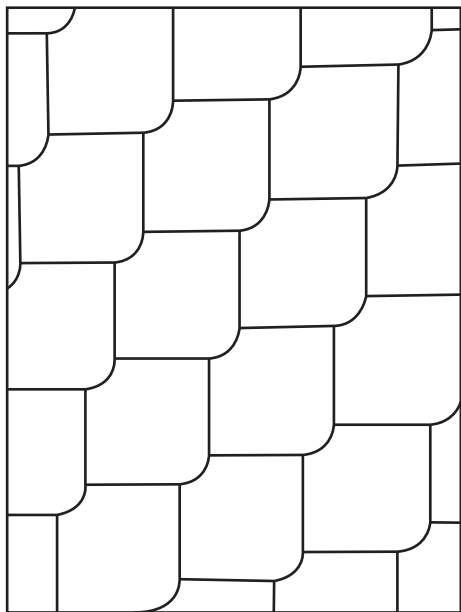


Oak Braid
15 x 262 x 389 mm, 15 x 90 x 365 mm

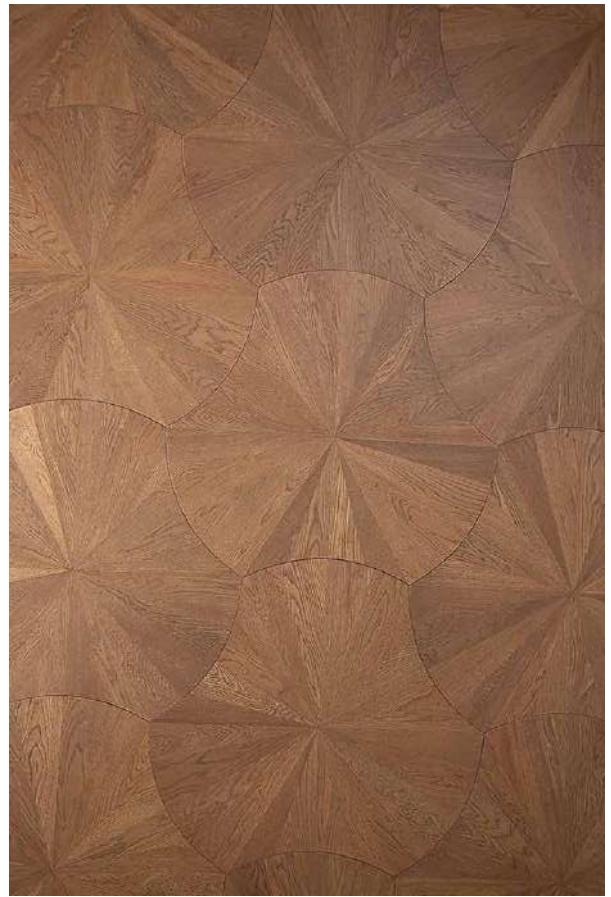




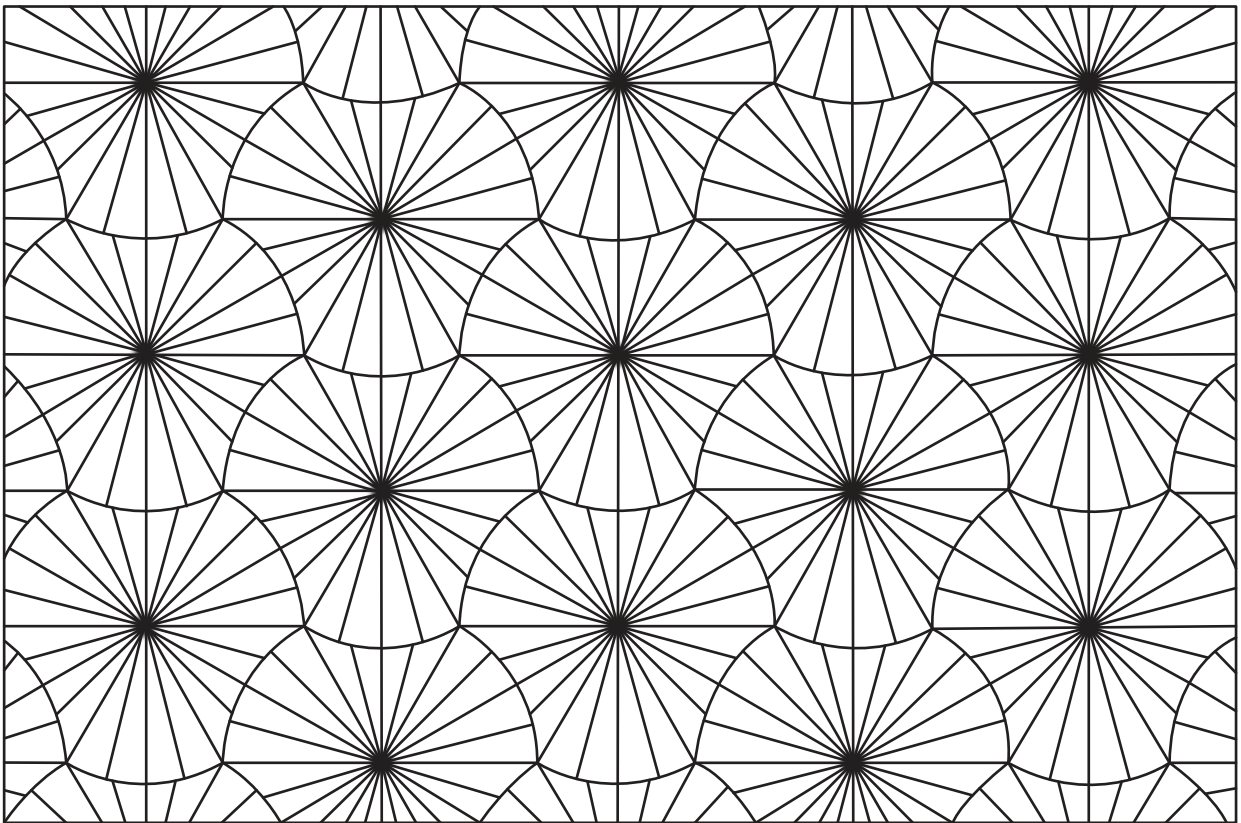
Walnut Leaf
15 x 224 x 530 mm

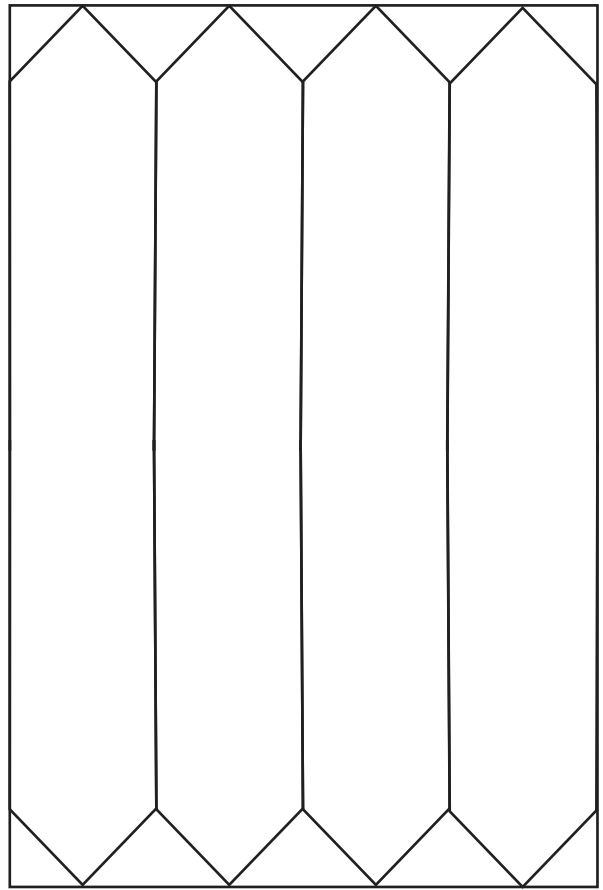


Oak Fishscale
15 x 300 x 300 mm

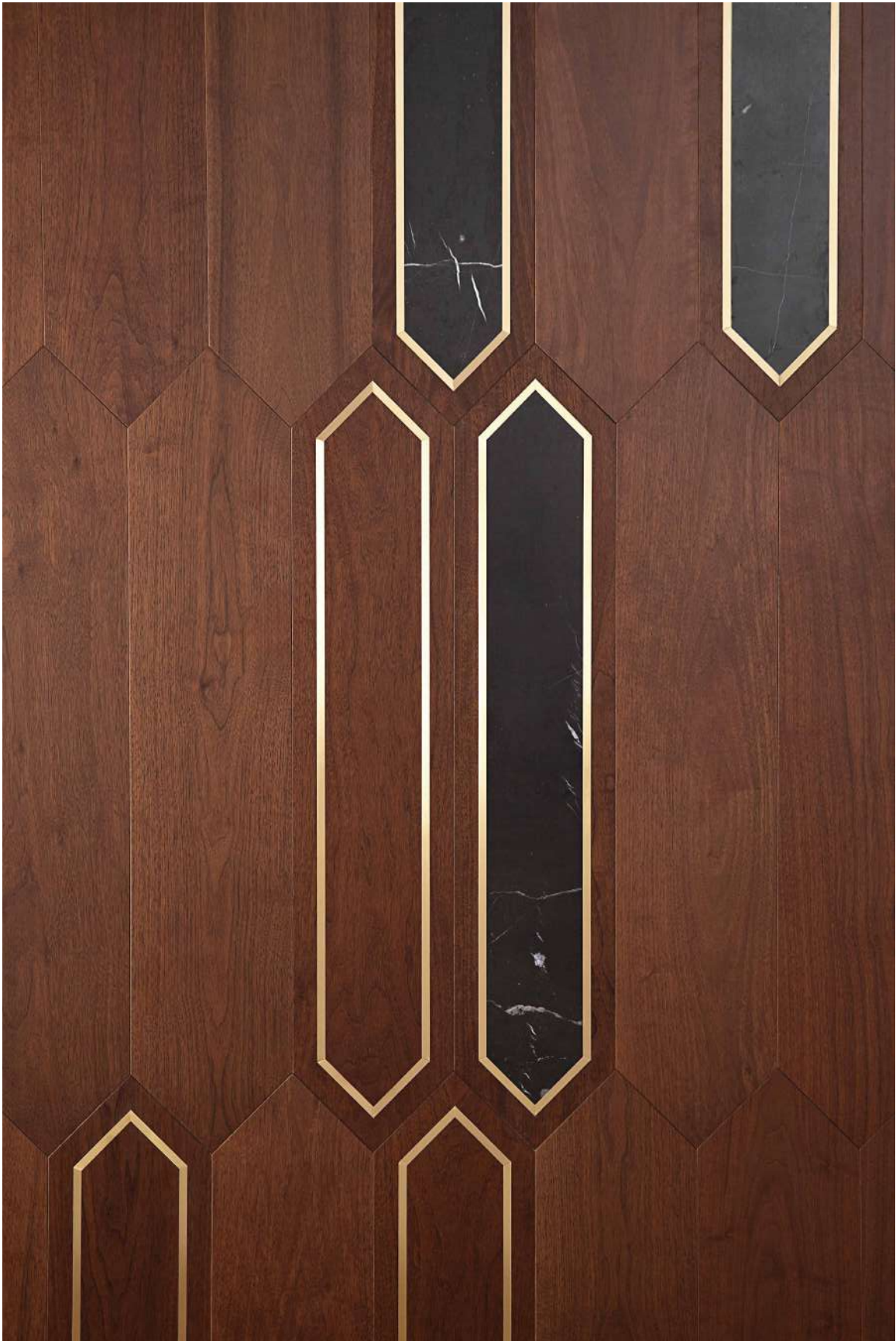


Oak Lotus
15 x 747.8 x 800 mm

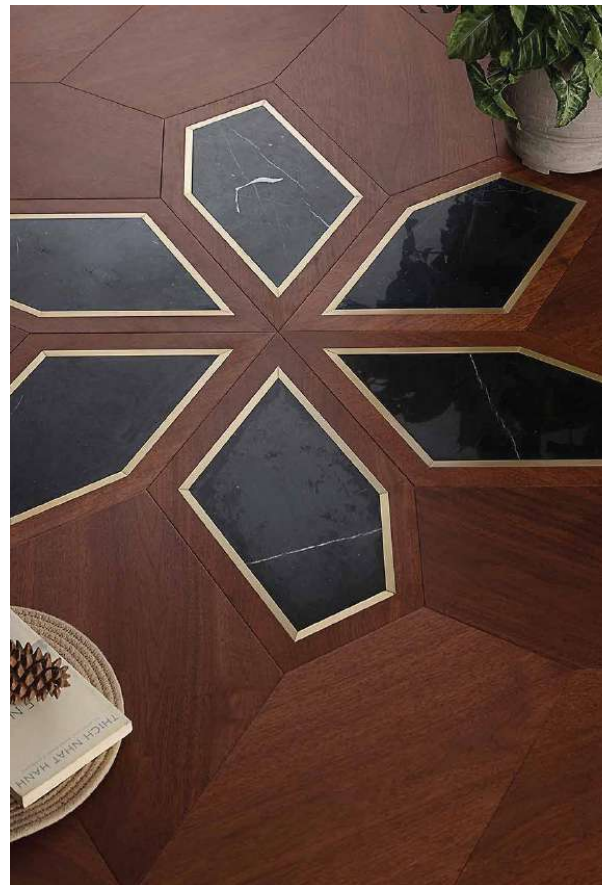
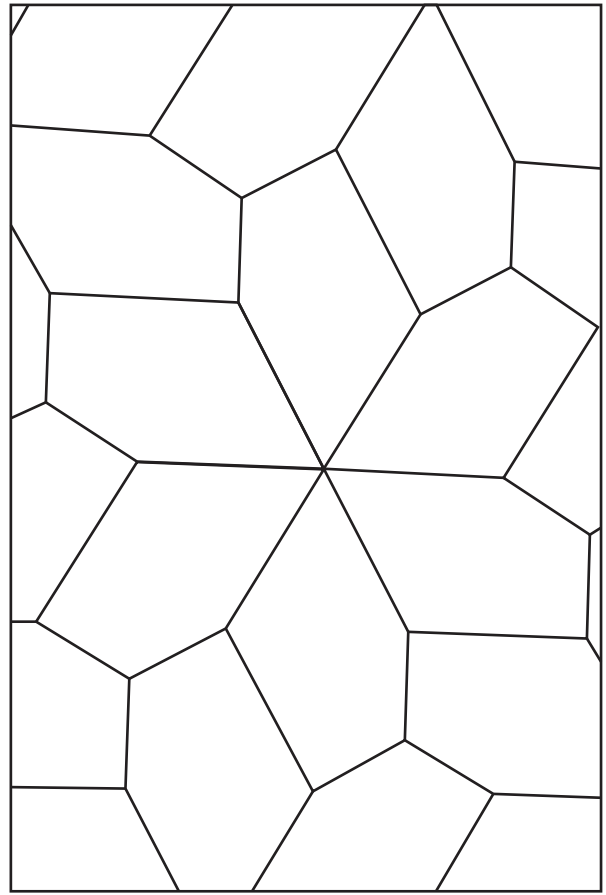




Walnut Arrow
15 x 200 x 1000 mm



Walnut Arrow Combination
15 x 200 x 1000 mm



Walnut Flower
15 x 259 x 450 mm



Walnut Flower Combination
15 x 259 x 450 mm



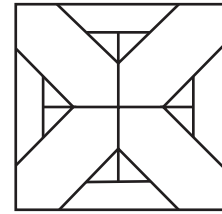
Chantilly Oak

Engineered Parquet Flooring

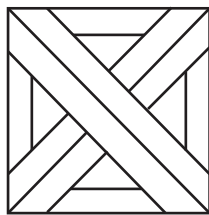
Parquet flooring is a type of wooden flooring characterized by its intricate, geometric patterns made from small pieces of wood arranged in designs like squares, rectangles, and diamonds. Unlike traditional plank flooring, parquet creates a textured, artistic look that can range from classic to modern styles. Popular patterns include herringbone, basketweave, and chevron, all of which add depth and visual interest to a space. Parquet flooring is known for its timeless appeal and ability to enhance the elegance of any interior. KAARA engineered parquet flooring comes with a total thickness of 15mm, offering the durability and quality that can withstand daily wear while maintaining its sophisticated appearance.

Size: 15/1.25mm x 450/600mm x 450/600mm



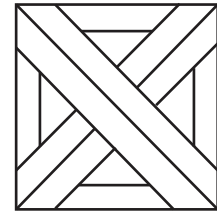


Ginger Oak
450 x 450 mm

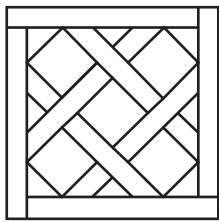


Dusk Grey Oak
450 x 450 mm



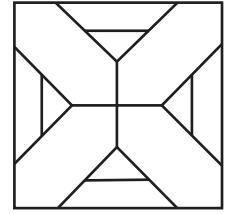


Oak Natural
450 x 450 mm

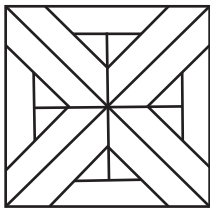


Oak Versailles Natural
600 x 600 mm



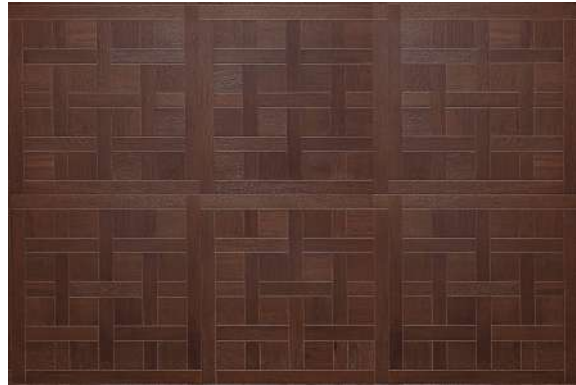
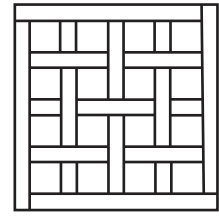


Rosso Wino Walnut
600 x 600 mm

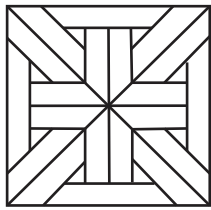


Earl Grey Oak
450 x 450 mm





Chantilly Oak
600 x 600 mm



Chocolate Oak
450 x 450 mm

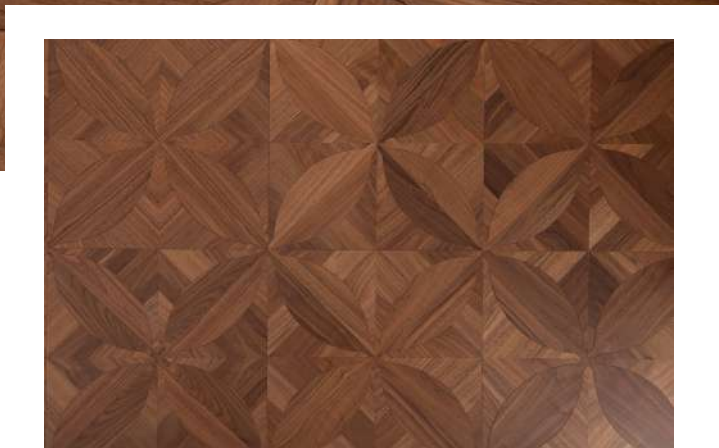




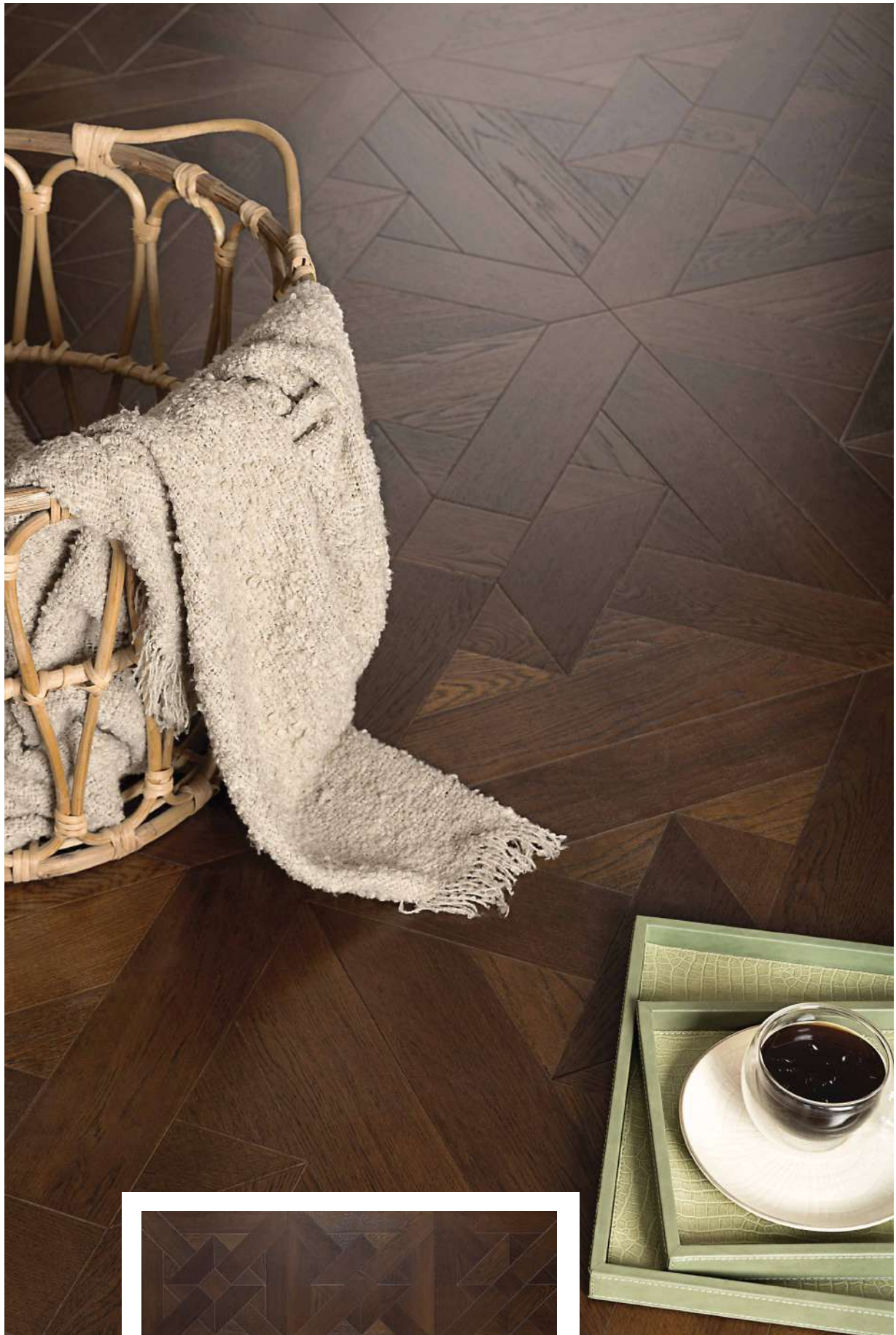
Chestnut Walnut
600 x 600 mm



Versailles Caramel
450 x 450 mm



Walnut Bloom
600 x 600 mm



Oak Champani
600 x 600 mm



Marmo Light
600 x 600 mm



Explore Our Other Series

- Laminate Wooden Flooring
 - Solid Hardwood Flooring
 - Bamboo Flooring
- Outdoor Solutions: IPE, WPC & More